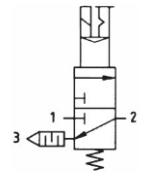


For pressurising and relieving pneumatic systems. 3/2-way type including silencer.
Ideal as the main "on" valve for service units.
The pressure in the line is exhausted when the valve is switched off.

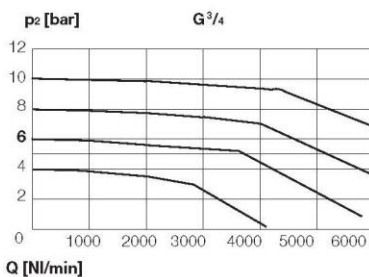


Technical data

	Size II		
Connection threads	G 1/2	G 3/4	G 1**
Nominal rates of flow (NI/min)*	3300	3800	3800
Operating pressure range (p _i)**	3 - 10 bar (higher pressures available upon request)		
Max. operating temperature	50 °C		
Protection class	IP65 to DIN 40050		
Rated voltage	24V = (optional 24V/50 Hz, 110V/50 Hz, 220V/50 Hz)		
Electrical thread	female connector acc. to DIN 43650, form B ind. PG9		
Material housing	zinc alloy		
Weight	980g	980g	1440g

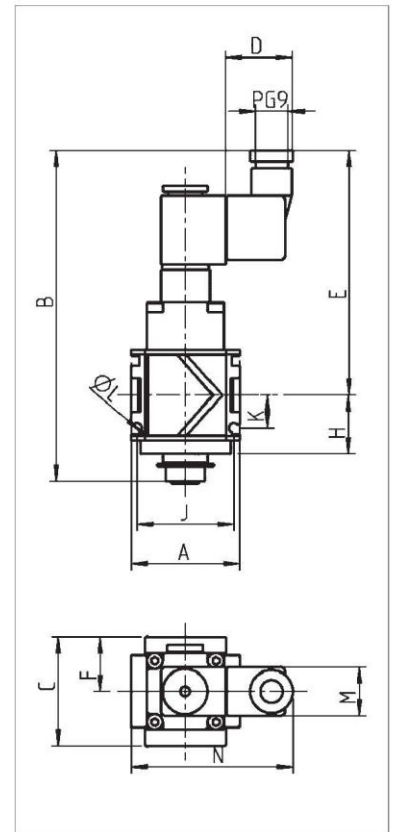
* Measured at 6 bar pre-pressure (p_i) and Δp = 1 bar
** Inlet and outlet only with mounting plates set G1

Rates of flow



Dimensions [mm]

Size	II	
Connection thread	G 1/2, G 3/4	G 1
A	70	124
B	157	157
C	70	70
D (∅)	30	30
E	113	113
F	35	35
H	33	33
J	62	62
K	18	18
L (∅)	5,4	5,4
M	22	22
N	82	82



On-off valve (3/2-way valve)

Art. No.	Type No.	Thread	Size
100734	VS 24	G 1/2	2
100735	VS 25	G 3/4	2
100736	VS 26	G 1	2

Spare parts

Art. No.	Type No.	Description
100737	400-447-101	Solenoid 24 V AC / 50 Hz
100738	400-447-107	Solenoid 110 V AC / 50 Hz
100739	400-447-117	Solenoid 230 V AC / 50 Hz
100740	400-447-142	Solenoid 24 V DC
100409	1920.9B	Coupling socket form B, EN 175301-803